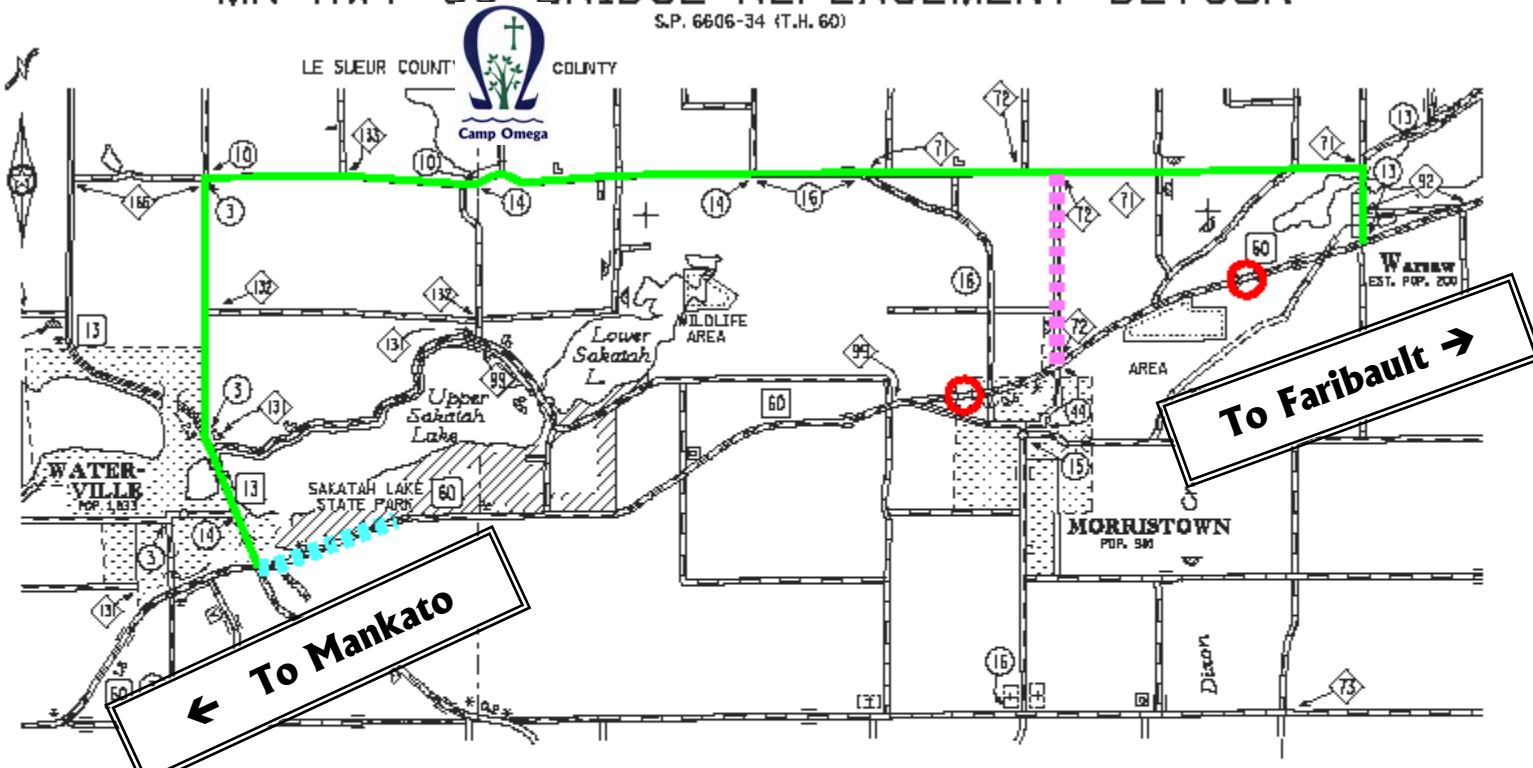


MN HWY 60 BRIDGE REPLACEMENT DETOUR

S.P. 6606-34 (T.H. 60)



← To Mankato

To Faribault →

LEGEND	
	DETOUR ROUTE
	SIGNED ROUTE TO MORRISTOWN
	SIGNED ROUTE TO SAKATAH STATE PARK
	BRIDGE REPLACEMENT



DATE 1-8-09

DETOUR WILL BE IN EFFECT FROM APPROXIMATELY MID-MAY UNTIL MID-SEPTEMBER, 2009. TIME FRAME IS SUBJECT TO CHANGE.